

# Amlib DIY Self Service Interface Patch Installation Guide

Version 5.4.2

Last Updated: 26 June 2014

# Only for customers who are not using the SIP2 manager & have previously upgraded their *DIY/SIP2 Client* to Version 5.4.

---

# Amlib DIY Self Service Interface Installation Guide

---

© 2014 OCLC (UK) Ltd

ALL RIGHTS RESERVED. Permission is granted to electronically copy and to print in hard copy portions of this document for training purposes by licensed users of the Amlib Library Management System. Any other uses – including reproduction for purposes other than those noted above, modification, distribution, republication, transmission, re-transmission, modification, or public showing – without the prior written permission of *OCLC (UK) Ltd* – is strictly prohibited.

## Support:

Australia: 1300 260 795 (Local call cost in Australia)

**Email:**

[support-amlib@oclc.org](mailto:support-amlib@oclc.org)

**Amlib Help Desk (TOPDesk):**

<https://servicedesk.oclc.org/tas/public/>

**OCLC Amlib Support Documentation:**

<https://www.oclc.org/support/services/amlib.en.html>

## Sales:

Australia: 1300 260 795 (Local call cost in Australia)

**Fax:** +61 (0) 3 9929 0801

**Email:** [sales-amlib@oclc.org](mailto:sales-amlib@oclc.org)

[www.oclc.org/en-AU/](http://www.oclc.org/en-AU/)

# Amlib DIY Self Service Interface Installation Guide

---

## TABLE OF CONTENTS

---

TABLE OF CONTENTS.....	3
WELCOME .....	5
BEFORE YOU BEGIN THE INSTALLATION... ..	5
Read the Installation Notes First .....	5
Serial Numbers NOT Required for Installation of Amlib Modules.....	5
Frequently Asked Questions.....	5
AMLIB Supported Operating System Requirements.....	6
PC Client.....	6
SECTION 1: UPGRADE AMLIB CLIENT ON DIY WORKSTATION .....	7
Step 1: Log All DIY Workstations out of Amlib Modules .....	7
Step 2: Install the Amlib 5.4.2 Client Patch .....	7
SECTION 2: UPGRADE AMLIB DIY (SELF-SERVICE) MODULE .....	8
SECTION 3: UPGRADE ALL DIY WORKSTATIONS.....	11



# Amlib DIY Self Service Interface Installation Guide

---

## WELCOME

---

Welcome to the *Amlib DIY/SIP2 5.4.2 Client Patch* Installation Guide for the *Amlib DIY (Self-Service) Module*.

This is a patch release updating the DIY/SIP2 module. The complete installation time is estimated at less than one (1) hour to complete.

**Please Note:** This document has been prepared for all libraries that currently have **Amlib DIY Module Version 5.4** installed.

## BEFORE YOU BEGIN THE INSTALLATION...

---

### Read the Installation Notes First

Please carefully read the entire installation guide prior to commencing the actual *DIY/SIP2* release update.

If you have any questions please contact: submit a support request on TOPDesk. If you do not know you login please email [support-amlib@oclc.org](mailto:support-amlib@oclc.org) and we will send it to you.

Amlib Help Desk (TOPDesk): <https://servicedesk.oclc.org/tas/public/index.jsp>

**Please Note:** This installation process is for existing *Amlib* customers who have purchased the optional *DIY (Self-Service) Module*.

**WARNING:** Please make sure that the latest version of the *Amlib Client* is installed and operational on the Self Issues workstation **BEFORE** installing the *Amlib DIY (Self-Service) Module*.

### Serial Numbers NOT Required for Installation of Amlib Modules

The *Amlib DIY/SIP2 Module 5.4.2 Client* patch DOES NOT require a serial number.

## Frequently Asked Questions

### Question: Do all DIY workstations need to be logged out?

- Yes. All DIY Workstations should be completely logged out from all *Amlib* modules (including DIY) whilst installing the new *Amlib* module releases UNTIL the entire upgrade processes are completed

### Question: Can OCLC (UK) Limited install the upgrade for me?

- Yes. *OCLC (UK) Limited* can arrange for the onsite installation of this upgrade for a fee

# Amlib DIY Self Service Interface Installation Guide

---

## AMLIB Supported Operating System Requirements

---

### PC Client

<b>Hardware</b>	<ul style="list-style-type: none"><li>• <i>Amlib</i> support recommend <i>Pentium 4</i> CPU and above for best performance</li></ul>
<b>Operating System</b>	<ul style="list-style-type: none"><li>• Windows XP, 2000, Vista, Windows 7</li></ul>
<b>Memory (RAM)</b>	<ul style="list-style-type: none"><li>• Minimum 256 Mb for Windows XP</li><li>• Minimum 256 Mb for Windows 2000</li><li>• Minimum 1GB for Windows 7</li><li>• Minimum 1GB for Windows Vista</li></ul>
<b>Hard Disk</b>	<ul style="list-style-type: none"><li>• 150 Mb Free Disk Space (if installed on local HDD)</li></ul>
<b>Display</b>	<ul style="list-style-type: none"><li>• SVGA (800x600) minimum</li></ul>
<b>RDBMS / ODBC Driver Software</b>	<ul style="list-style-type: none"><li>• Relevant <i>Microsoft SQL Server ODBC Driver</i> installed (minimum MDAC 2.6 and above)</li><li>• <i>Oracle Net8</i> (SQL * Net) is required</li></ul>
<b>Interface and Security System Link</b>	<ul style="list-style-type: none"><li>• SIP2 Compatible via TCP/IP or Serial Port</li><li>• Certified vendors:<ul style="list-style-type: none"><li>○ <i>3M</i></li><li>○ <i>Raeco</i></li><li>○ <i>Talking Technologies</i></li><li>○ <i>Queensland Library Supplies</i></li><li>○ <i>STi LogiTrack RFID</i></li><li>○ <i>EnvisionWare</i></li><li>○ <i>Smart Library</i></li></ul></li></ul>

**Please Note:** To assist with email support we highly recommend that the default installation folders suggested in the following notes be retained.

For example:

- *Amlib Client* software: **C:\Amlib** (or **D:\Amlib**, **E:\Amlib**)

# Amlib DIY Self Service Interface Installation Guide

---

## SECTION 1: UPGRADE AMLIB CLIENT ON DIY WORKSTATION

---

The *Amlib Client* needs to be updated on the DIY Workstation, and connectivity to the database confirmed **PRIOR** to the installation of the *Amlib DIY Module*.

### Step 1: Ensure You Amlib Client is running on Version 5.4

**IMPORTANT:** Please ensure that you have **full read/write** access to the **\Amlib** folder on your PC (for example: **C:\Amlib**) and that you are logged in with Administrative Privileges.

1. In Amlib navigate to **Main > Base > About Release**
2. Note the Version Number at the top of the Window- it must be 5.4
3. If your Version number is not 5.4 please follow upgrade Amlib using the guides and files on the content portal
4. If in doubt about this please contact Amlib support via TOPdesk as above

### Step 2: Log All DIY Workstations out of Amlib Modules

- Ensure all workstations have been logged out of both the *Amlib* client and the *Amlib DIY Module*

# Amlib DIY Self Service Interface Installation Guide

---

## SECTION 2: UPGRADE AMLIB DIY (SELF-SERVICE) MODULE

---

The *Amlib DIY Module* is installed in the same folder as the *Amlib Client*, so it is important that the latest version of the *Amlib Client* be installed **BEFORE** proceeding.

**IMPORTANT:** Please ensure that you have **full read/write** access to the **\Amlib** folder on your *DIY* workstation (for example: **C:\Amlib**) and that you are logged in with Administrative Privileges.

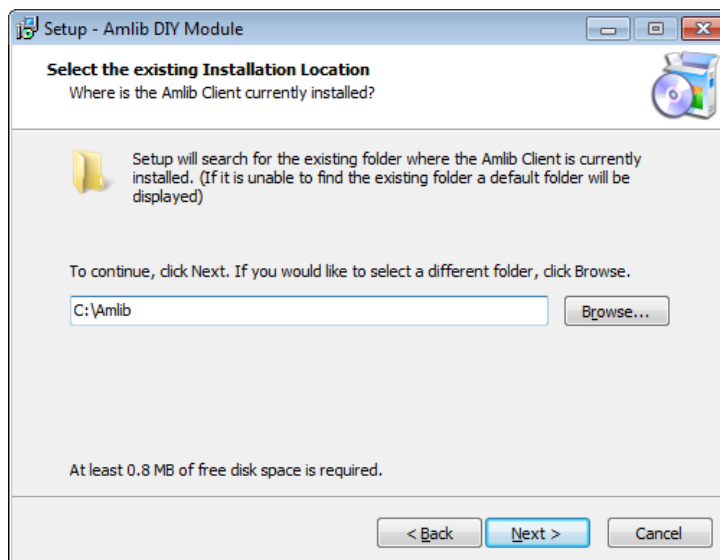
1. The *Amlib DIY 5.4.2 Module Patch* installer is available on the OCLC Website, under Updates and Patches>DIY:  
<https://www.oclc.org/support/services/amlib/downloads-software-updates/version5-4/updates-and-patches.en.html>  
(contact *Amlib* support if you require a login to this website)
2. Download the **DIY542Patch.exe** and save it on your *DIY* workstation
3. Double-click the **DIY542Patch.exe** to launch the installation Wizard – the Setup – Amlib DIY Module screen will open displaying the **Welcome** message:



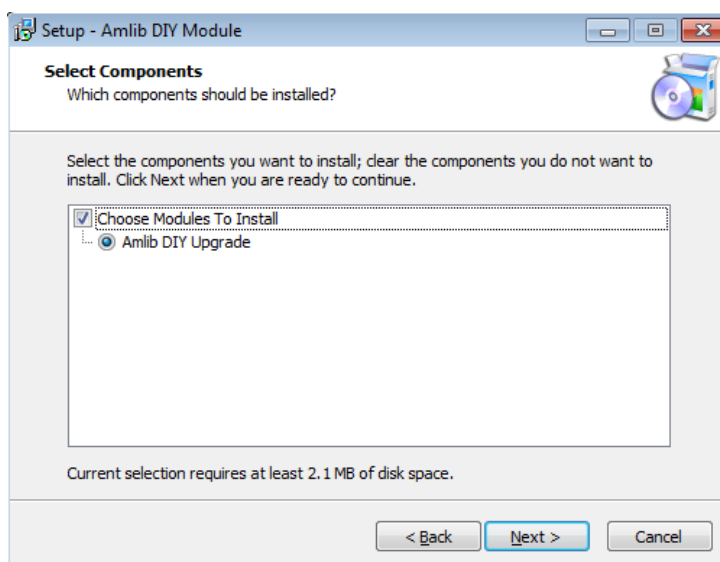
4. Click the **Next** button – the Installation Location screen will display:



# Amlib DIY Self Service Interface Installation Guide



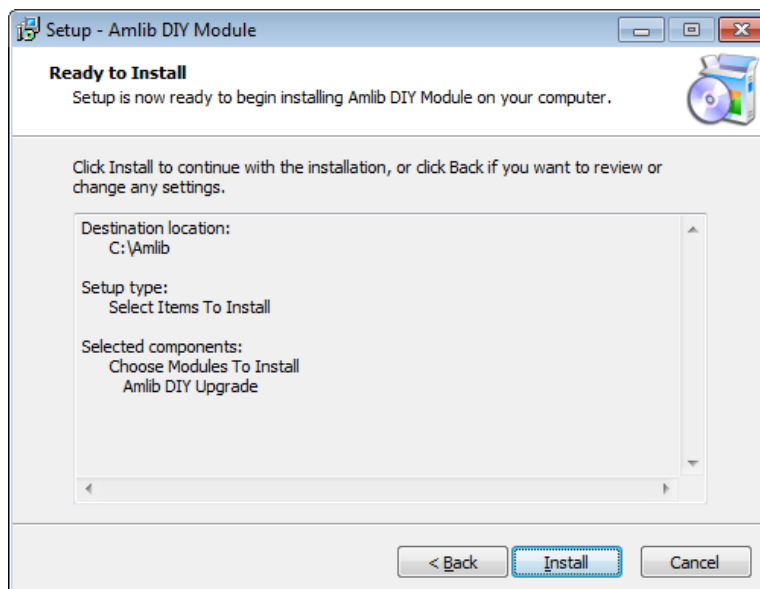
5. Select the folder where the *Amlib Client* is installed (as in the previous section) – a Default location will automatically display – for example: **C:\Amlib**
6. Click the **Next** button – the Select Components window will display:



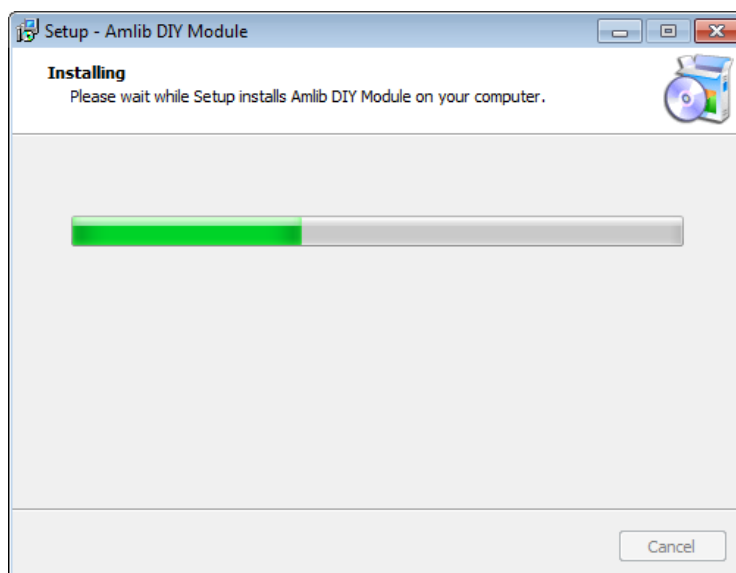
7. Choose which components should be installed:
  - a. Modules To Install:
    - **Amlib DIY Upgrade** – installs the *Amlib DIY* program files into the existing *Amlib Client* folder
8. Select options and click the **Next** button
9. The Ready to Install screen will display with a summary of the installation tasks to be performed:

# Amlib DIY Self Service Interface Installation Guide

---



10. Click the **Install** button – the Installing window will display:



11. When complete click the **Finish** button



12. The setup Wizard will close

Installation of the *Amlib DIY 5.4.2 Module Patch* is now complete.

## SECTION 3: UPGRADE ALL DIY WORKSTATIONS

---

Ensure that all DIY Workstations are upgraded using the above instructions.